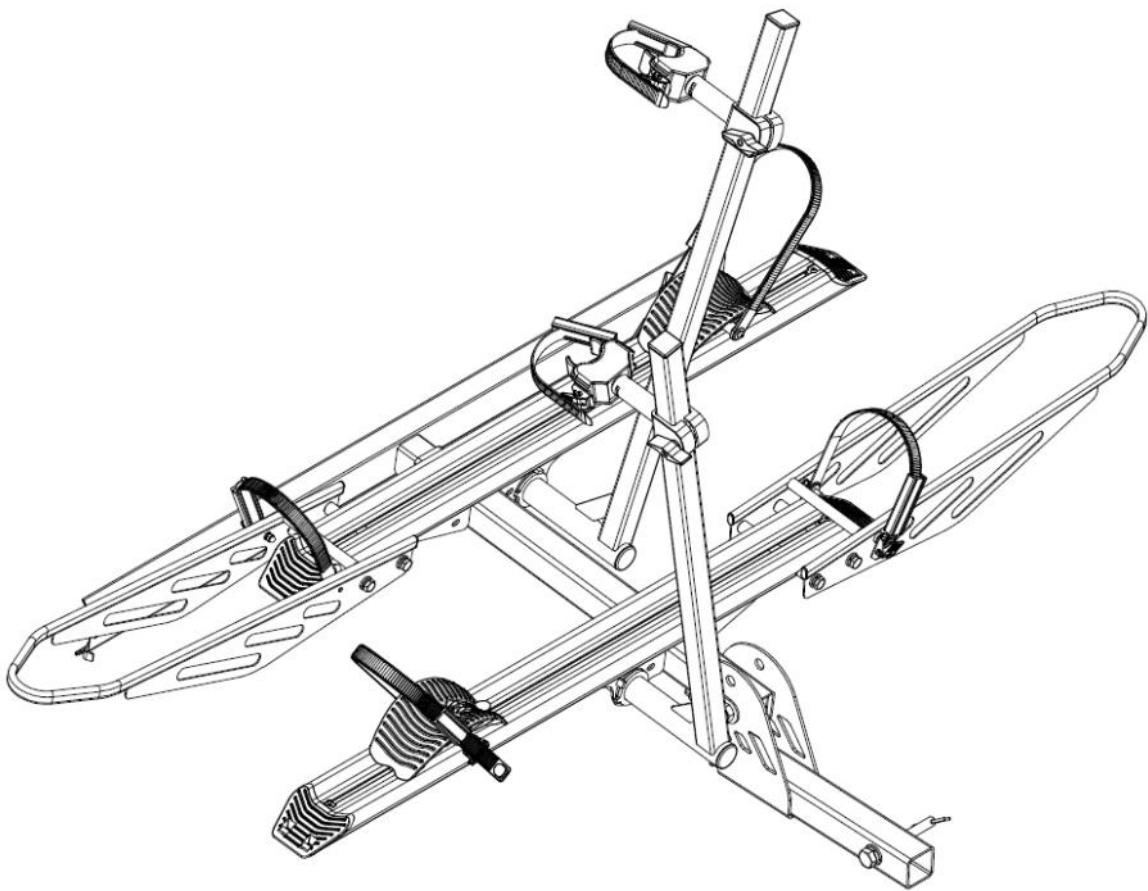




2-Bike Rack with Ramp

ITEM:10104148

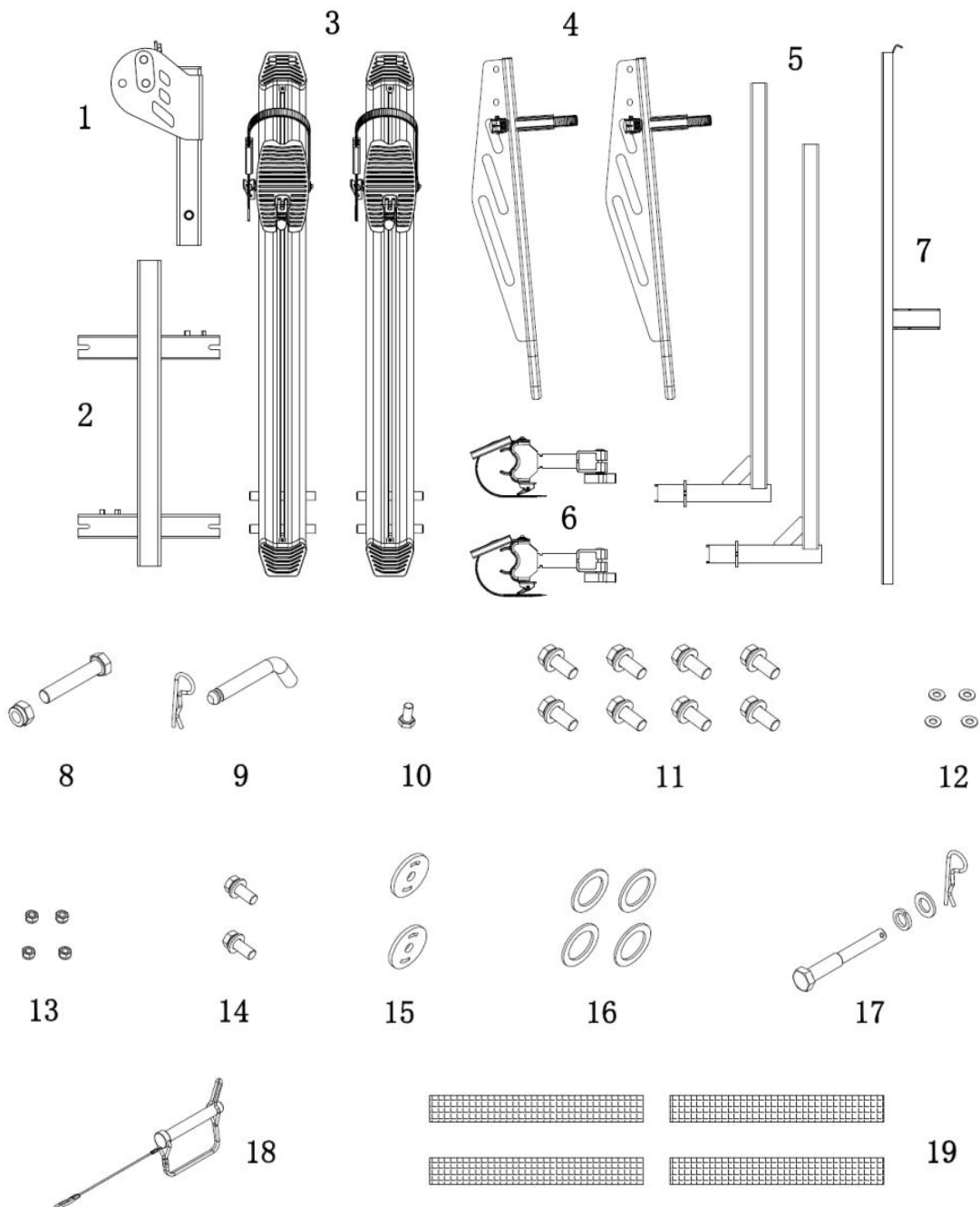


MANUAL

Technical Specifications

Property	Specification
Length	71.5"
Width	40"
Height	40"
Maximum Weight Capacity	200LBS

Parts List



Recommended Tools for Assembly (Not Included)



Monkey Wrench (1pc)
Size=300mm



Open Wrench (1pc)
Size=17mm



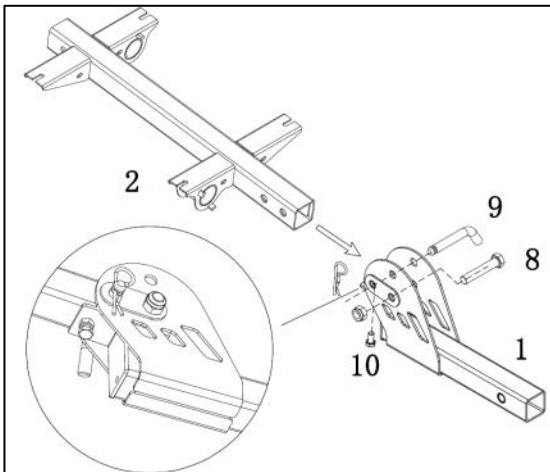
Open Wrench (1pc)
Size=19mm



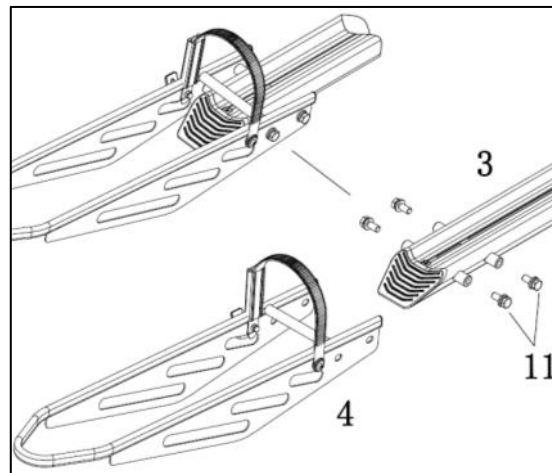
Open Wrench (1pc)
Size=24mm

Assembly Instructions

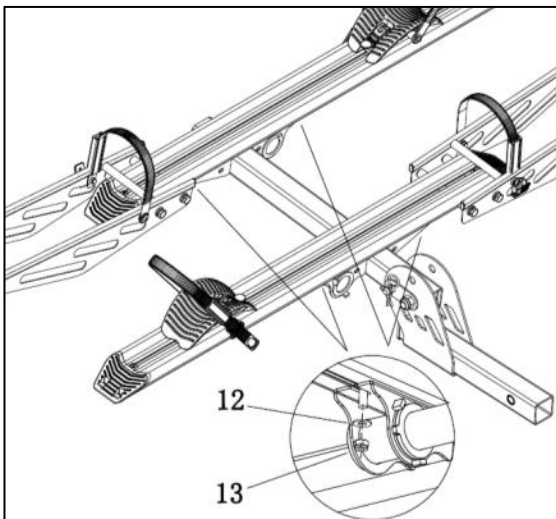
Step 1:



STEP2:

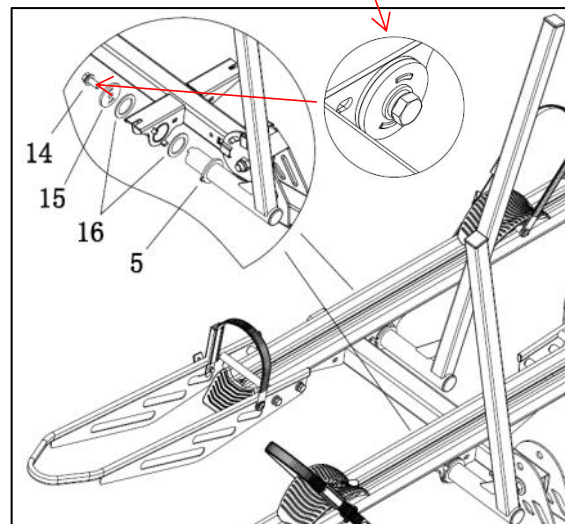


Step 3:

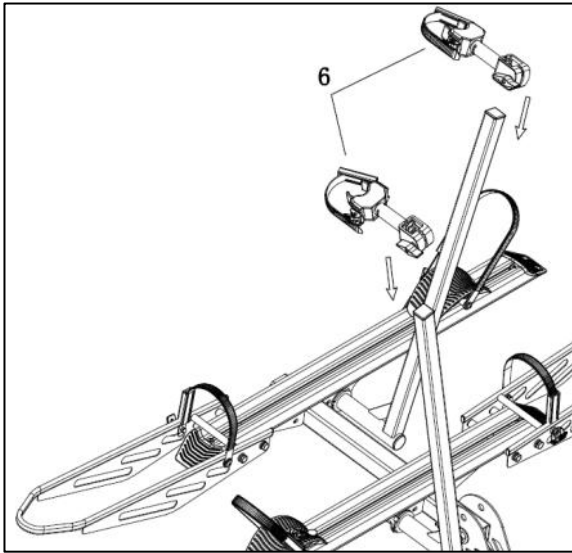


The boss is put into the hole,
and the bolt torque is 50Nm

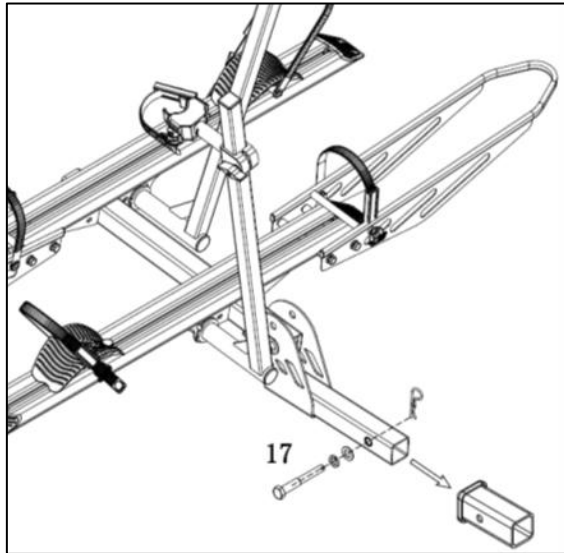
STEP4:



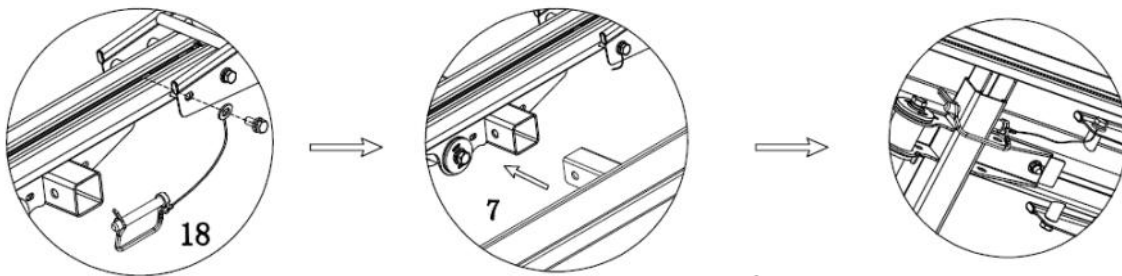
Step 5:



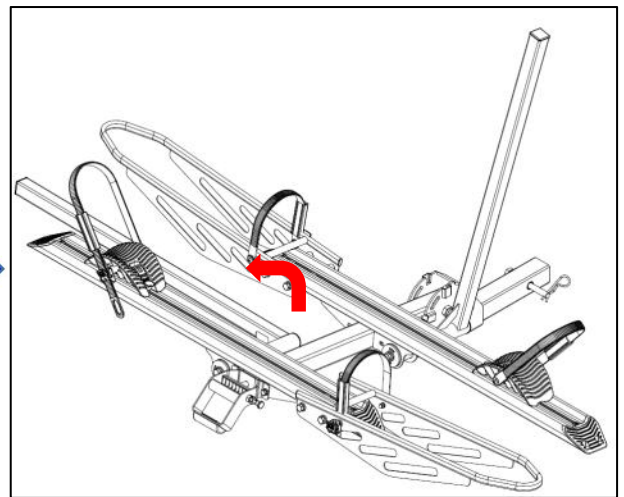
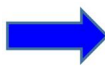
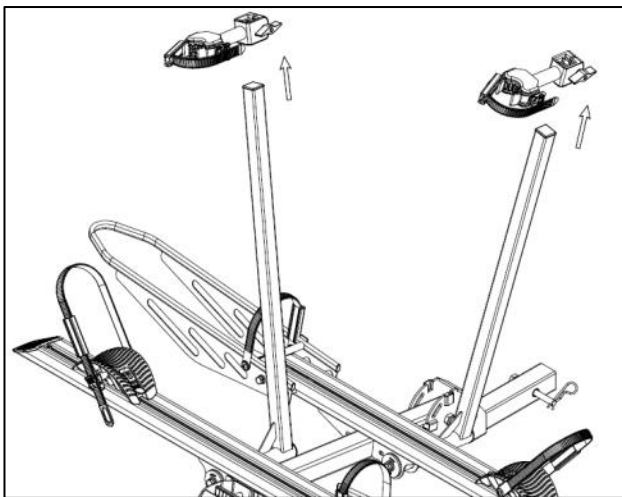
STEP6:

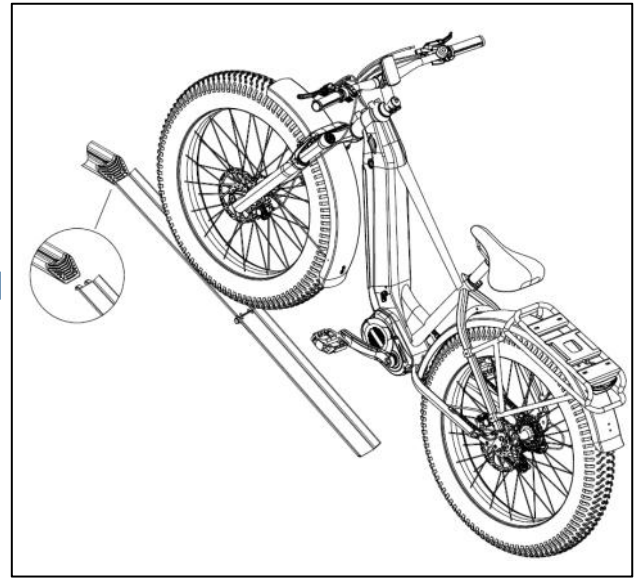
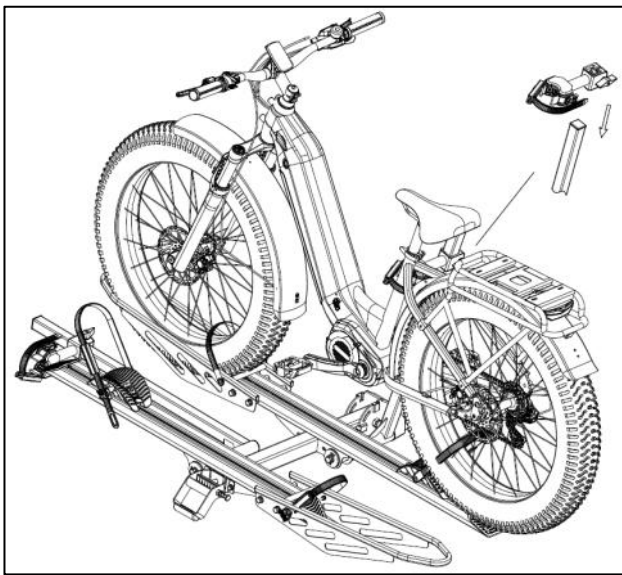


STEP7: Ramp Installation Instruction

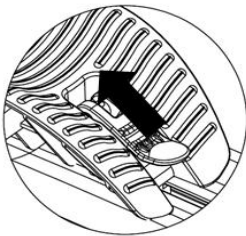


Bike Installation Instructions (Second bike rack same step)

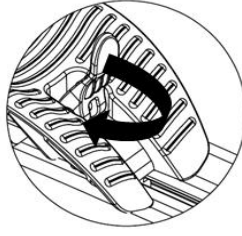




2A. How to secure the wheel cradle.



Pull the cam gear

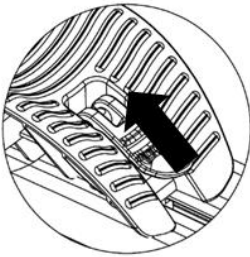


Turn it clockwise

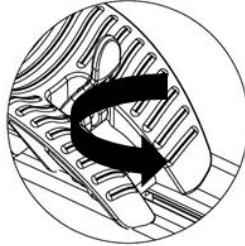


Press it down

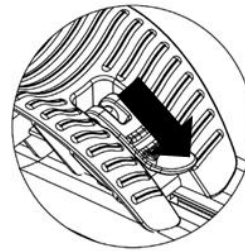
2B. How to release the wheel cradle.



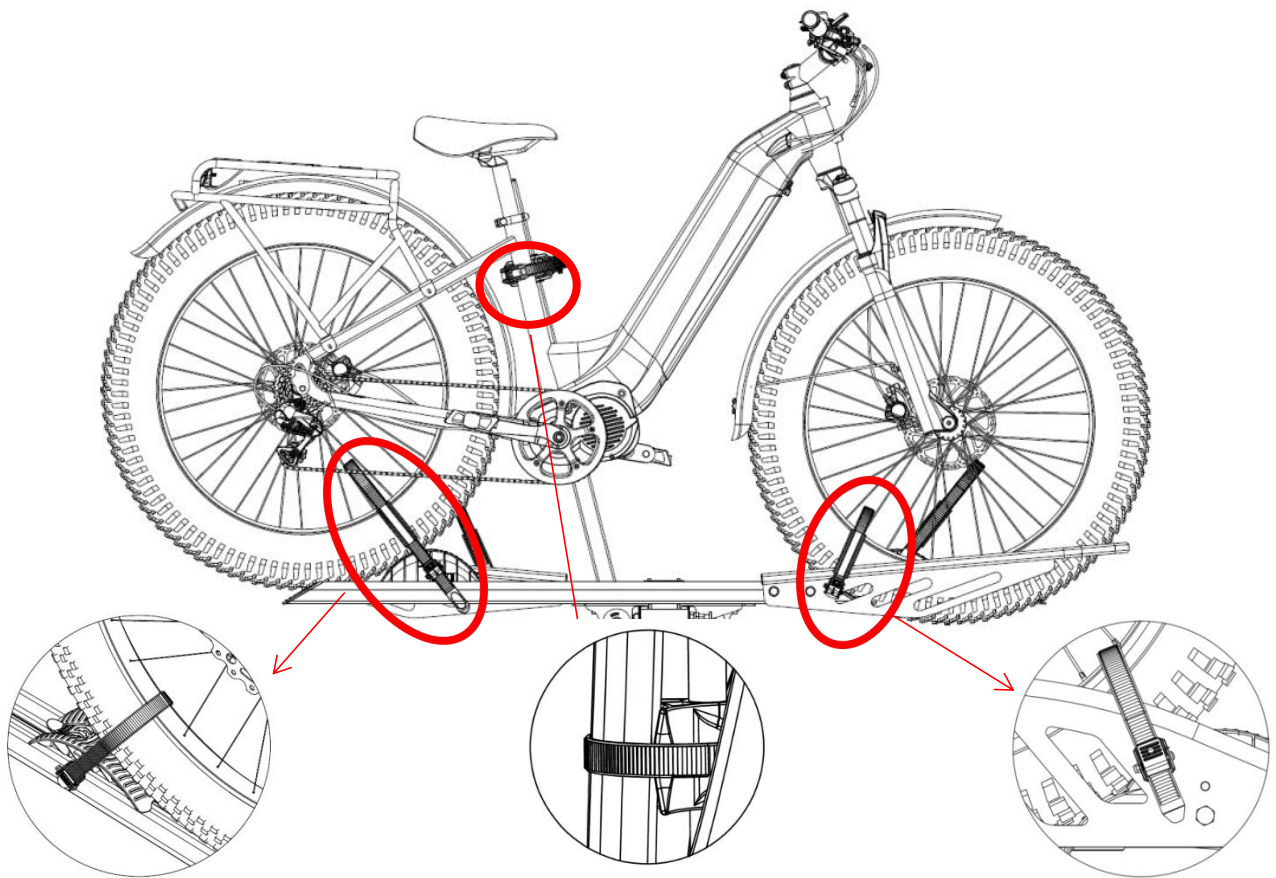
Pull the cam gear



Turn it
Counterclockwise



Press it down



Note: The rear tire fixing seat needs to be placed in front of the rear wheel.

Note: Tighten the straps from the Adjustable Block.

Note: Tighten the straps from the Front Wheel Holder.
The use of narrow tires within 3" requires serial number 19 adhesive tape fixation

No. 6 The adjustment support assembly must be placed at the bottom of the aluminum beam and secured with No. 19 adhesive tape.

Folding Status

