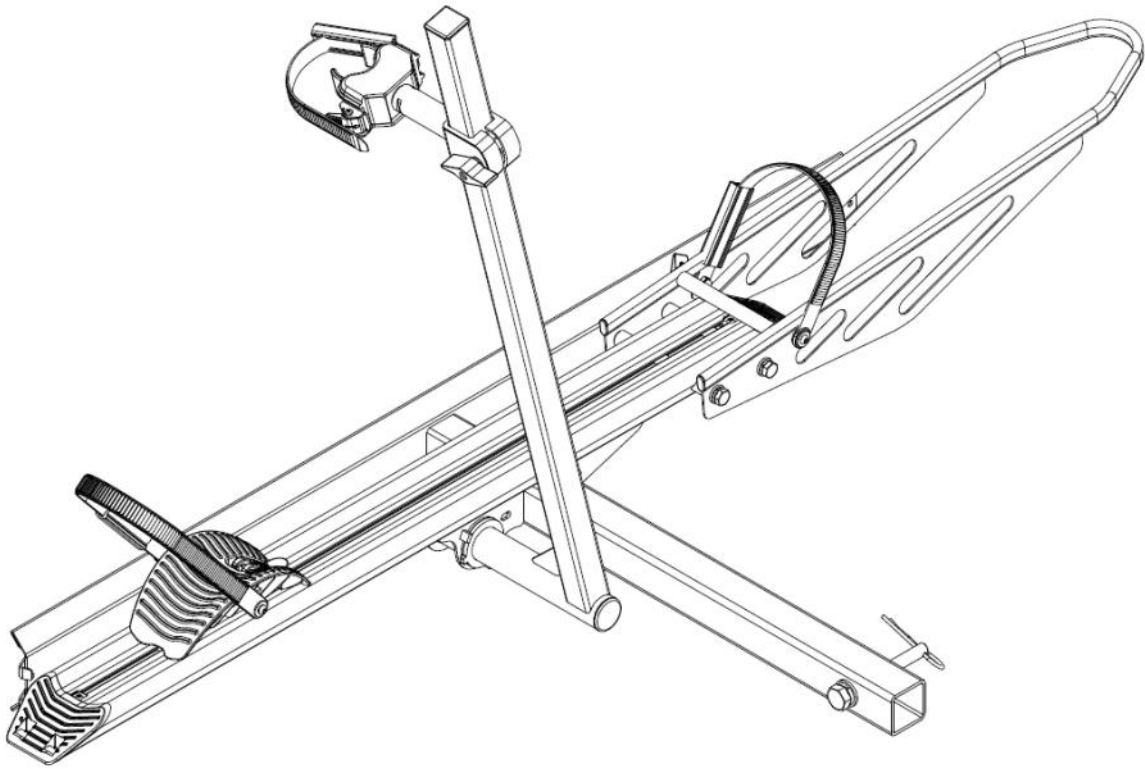




1-Bike Rack with Ramp

ITEM:10104149

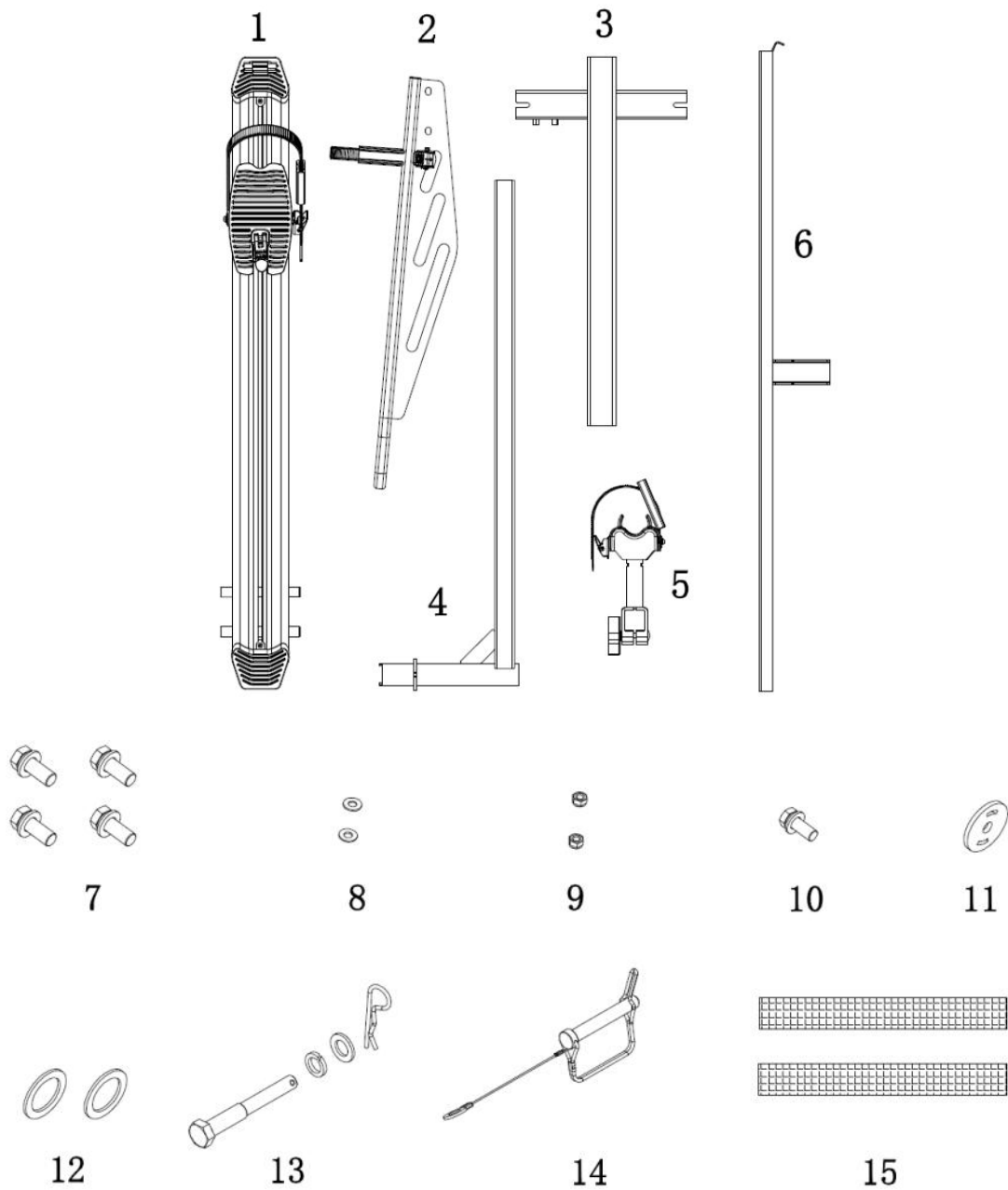


MANUAL

Technical Specifications

Property	Specification
Length	64.5"
Width	28"
Height	34"
Maximum Weight Capacity	100LBS

Parts List



Recommended Tools for Assembly (Not Included)



Monkey Wrench (1pc)
Size=300mm



Open Wrench (1pc)
Size=17mm



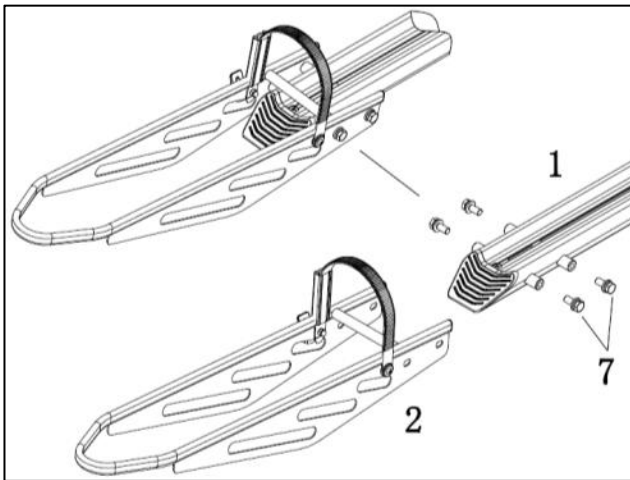
Open Wrench (1pc)
Size=19mm



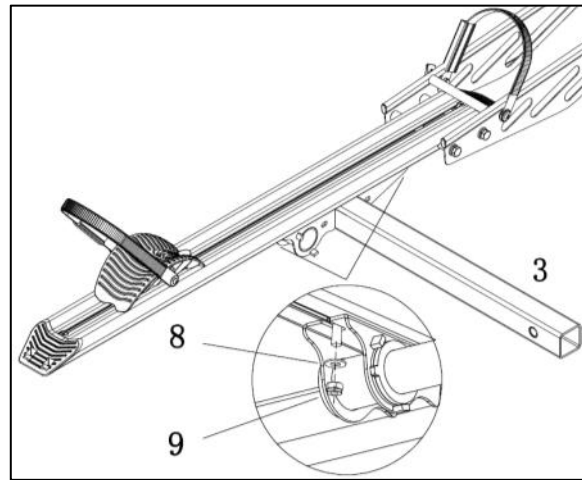
Open Wrench (1pc)
Size=24mm

Assembly Instructions

Step 1:

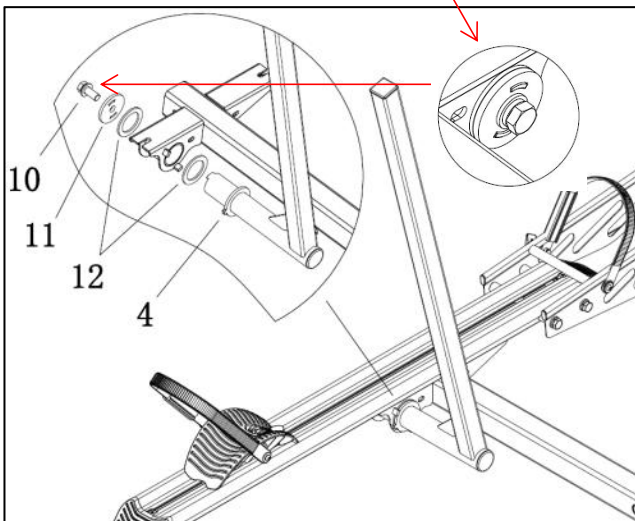


STEP2:

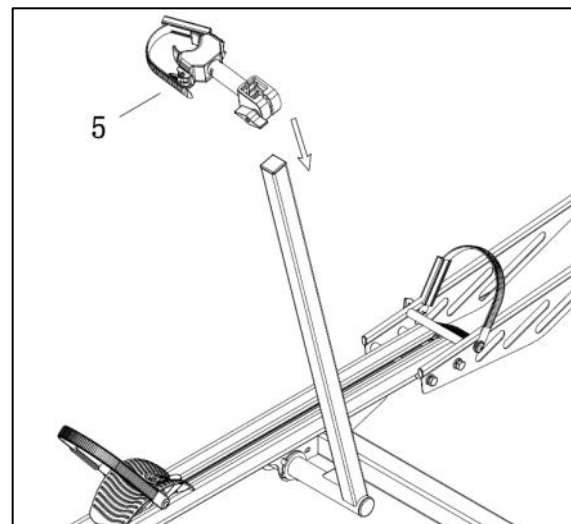


The boss is put into the hole, and the bolt torque is 50Nm

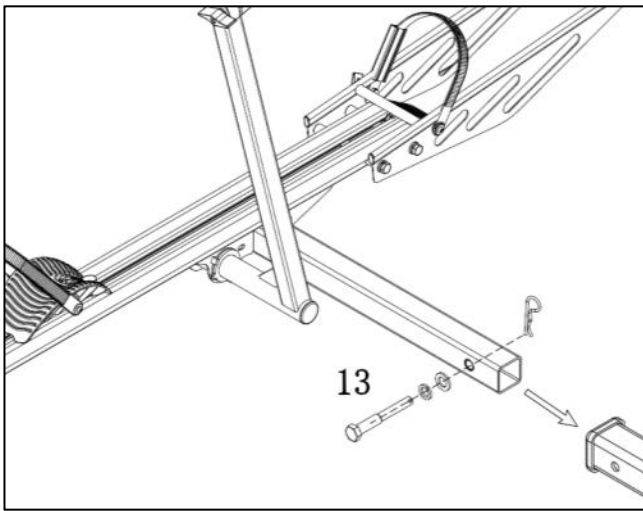
Step 3:



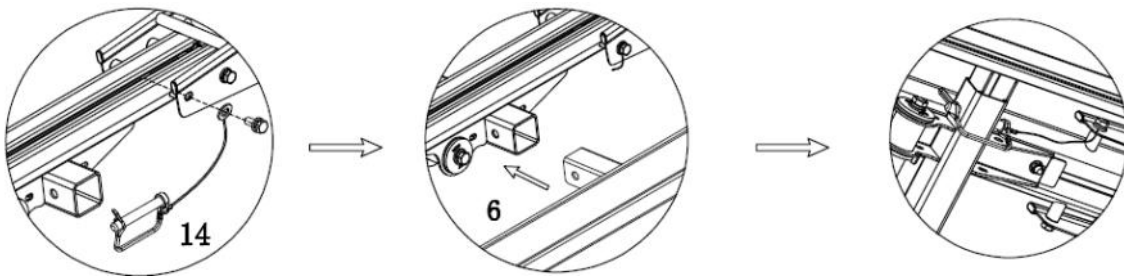
STEP4:



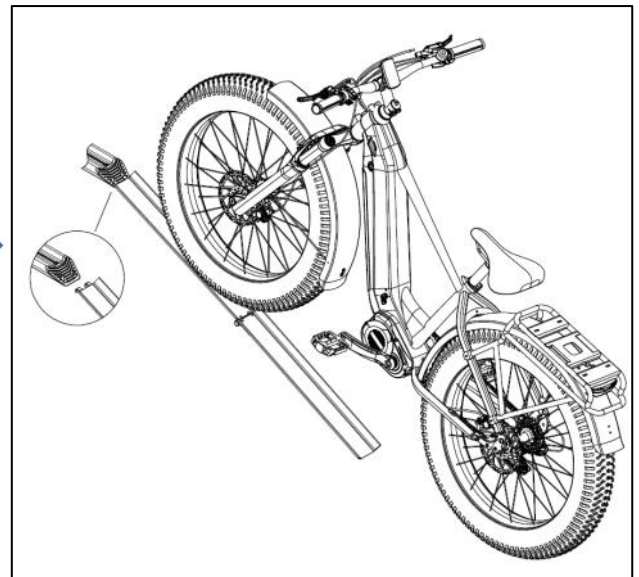
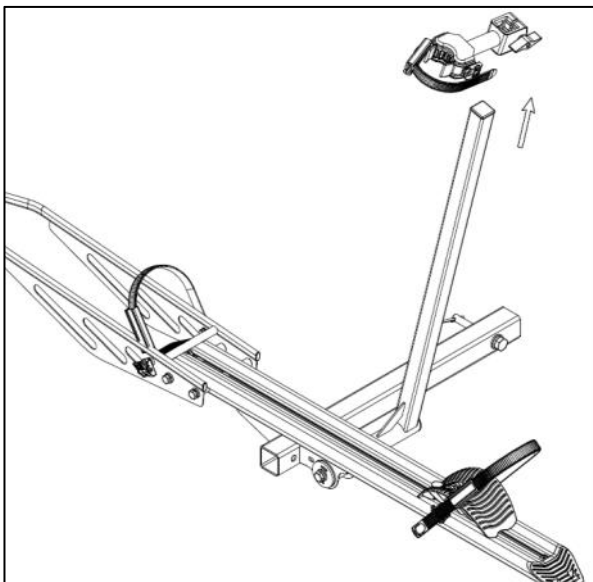
Step 5:

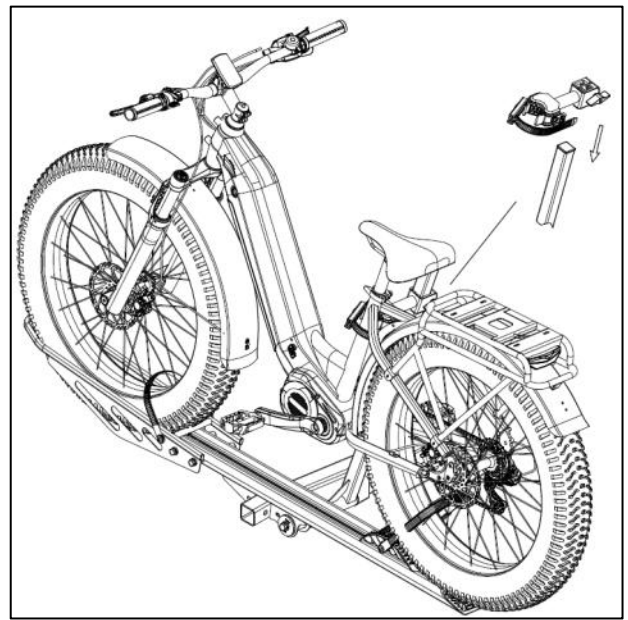


STEP6: Ramp Installation Instruction

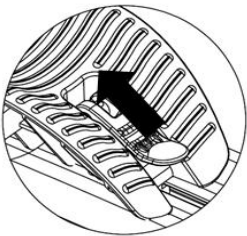


Bike Installation Instructions

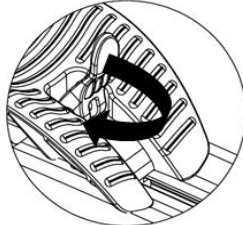




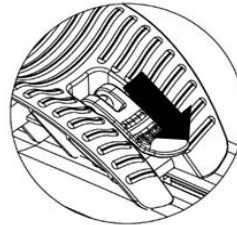
2A. How to secure the wheel cradle.



Pull the cam gear

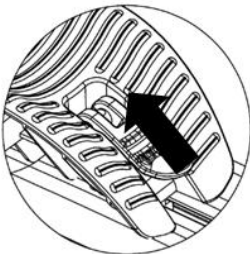


Turn it clockwise



Press it down

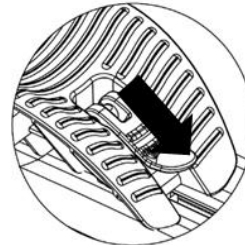
2B. How to release the wheel cradle.



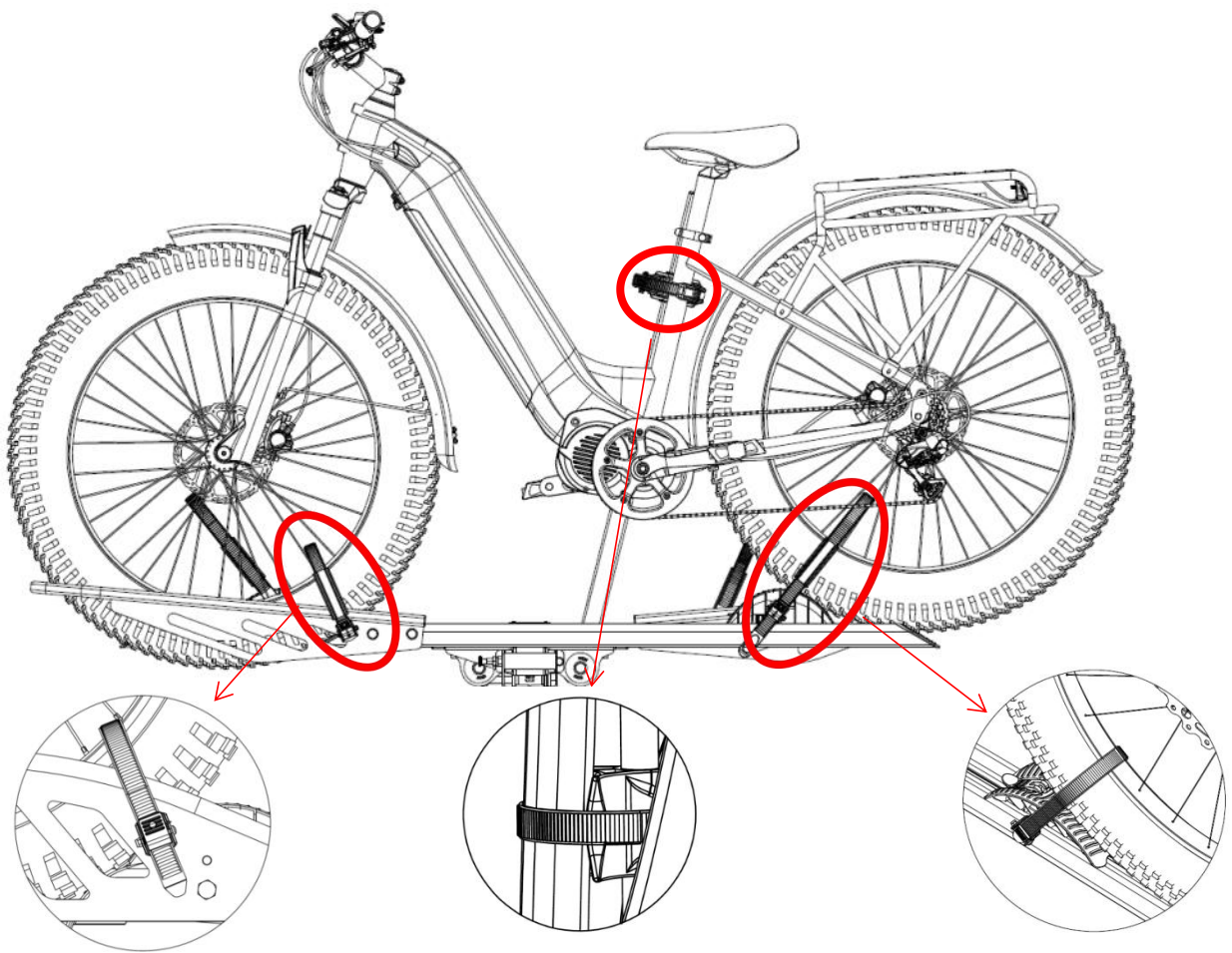
Pull the cam gear



Turn it
Counterclockwise



Press it down



Note: Tighten the straps from the Front Wheel Holder. The use of narrow tires within 3 "requires serial number 15 tape fixation.

Note: Tighten the straps from the Adjustable Block.

Note: The rear tire fixing seat needs to be placed in front of the rear wheel.